

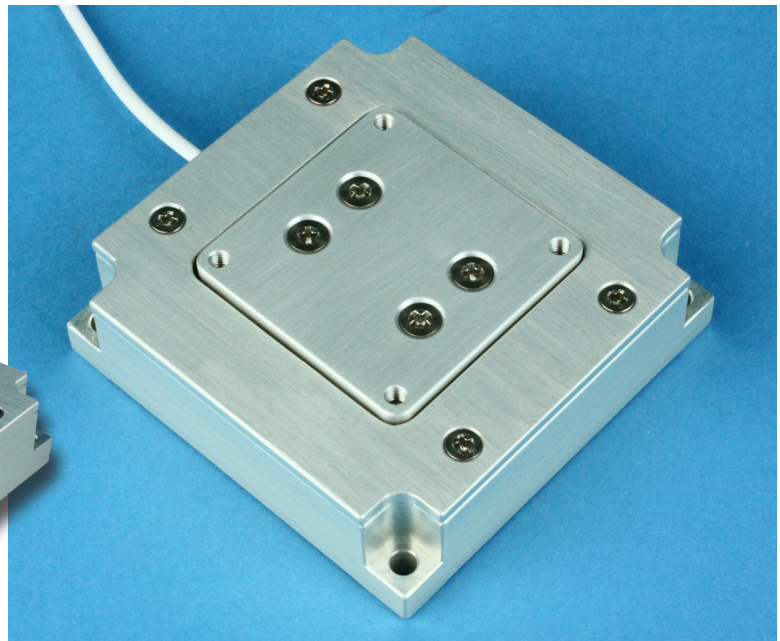
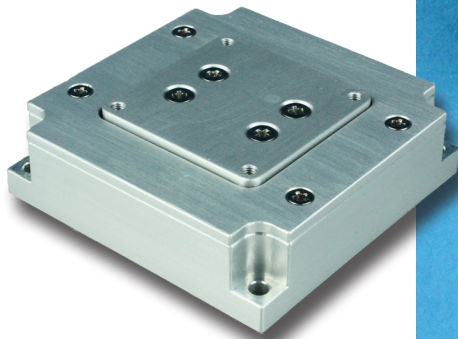
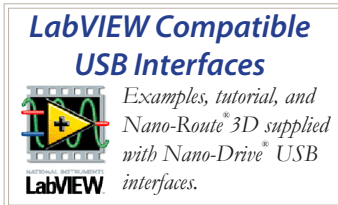
Nano-M3Z

Features

- ▶ Compact design
- ▶ Three axis motion (Z , θ_x , θ_y)
- ▶ Low profile: 0.76"
- ▶ **pico** sensor technology
- ▶ Closed loop control

Typical Applications

- ▶ Z-axis plus tip/tilt alignment
- ▶ Nanolithography
- ▶ Metrology
- ▶ Nano-alignment



Nano-M3Z constructed from aluminum.

Product Description

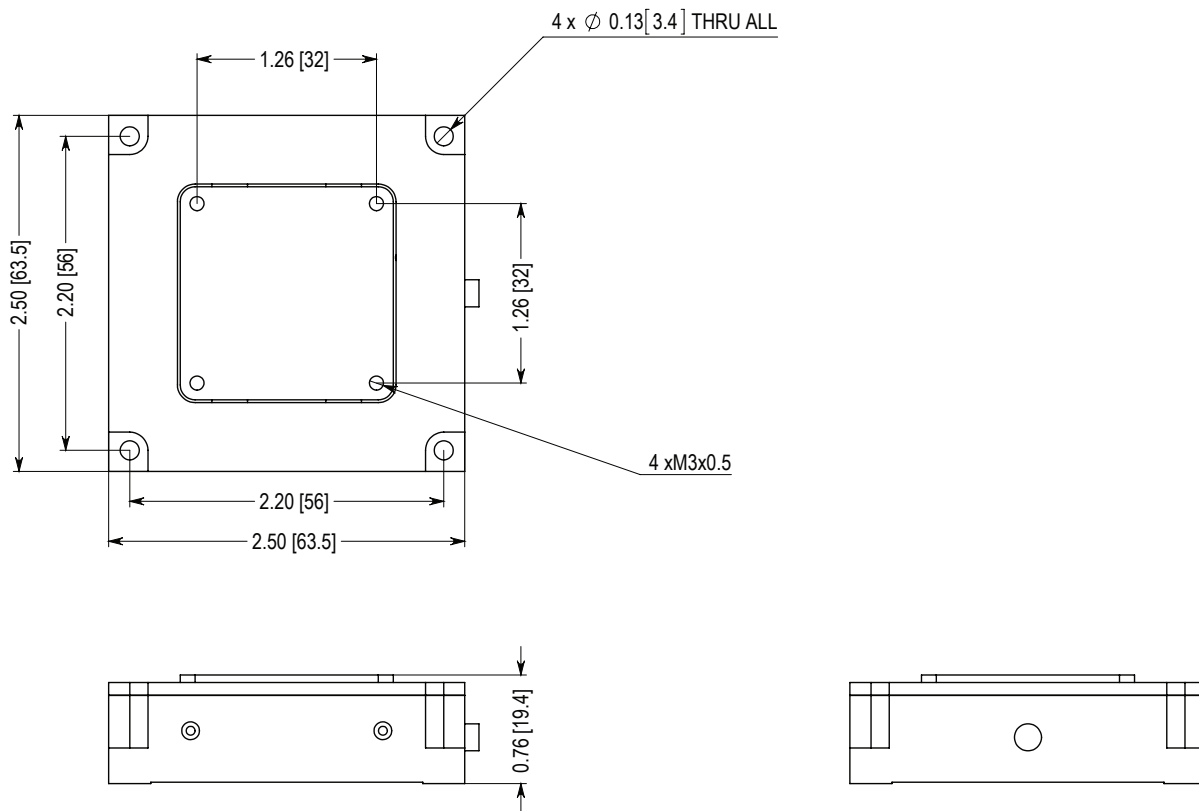
The Nano-M3Z is a compact, three axis (Z , θ_x , θ_y) nan positioning system constructed from aluminum. The compact design of the Nano-M3Z allows it to be integrated into existing instrumentation where space is restricted. The Nano-M3Z is ideal for demanding applications which require precise alignment capabilities. Internal position sensors utilizing proprietary **pico** technology provide absolute, repeatable position measurement with picometer and nanoradian accuracy

under closed loop control. A related model, the Nano-Man5, incorporates linear X and Y motion to the capabilities of the Nano-M3Z.

Technical Specifications

Range of motion (Z)	25 μ m
Range of motion (θ_x)	1 mradian
Range of motion (θ_y)	1 mradian
Resolution (Z).....	0.05 nm
Resolution (θ_x).....	2 nradian
Resolution (θ_y).....	2 nradian
Resonant Frequency	500 Hz \pm 20%
Stiffness.....	1.0 N/ μ m
Recommended max. load (horizontal)*	0.5 kg
Recommended max. load (vertical)*	0.2 kg
Body Material	Aluminum
Controller	Nano-Drive [®]

* Larger load requirements should be discussed with our engineering staff.



Note: All Dimensions in Inches [mm]