

Features


- ▶ Ultra-fast response
- ▶ Femtometer noise floor
- ▶ High stability
- ▶ Closed loop control
- ▶ Compact size
- ▶ Picometer positioning resolution
- ▶ **pico** sensor technology

Typical Applications

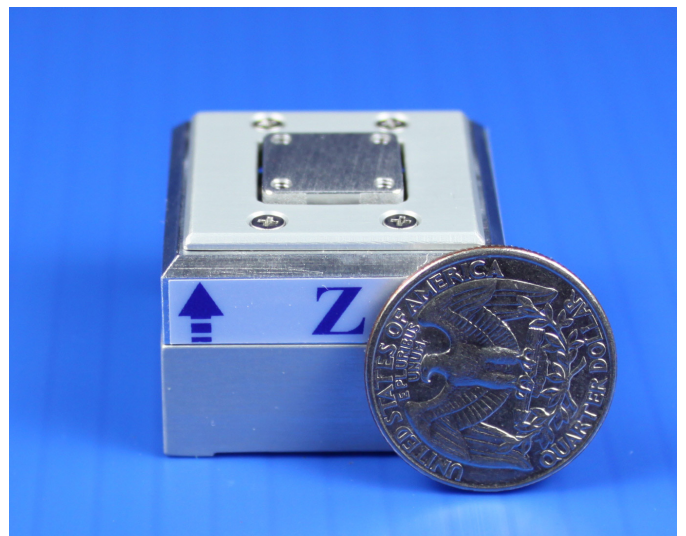
- ▶ High speed, high resolution positioning
- ▶ Metrology
- ▶ AFM
- ▶ SPM



**LabVIEW Compatible
USB Interfaces**



Examples, tutorial, and Nano-Route 3D supplied with Nano-Drive USB interfaces.



Product Description

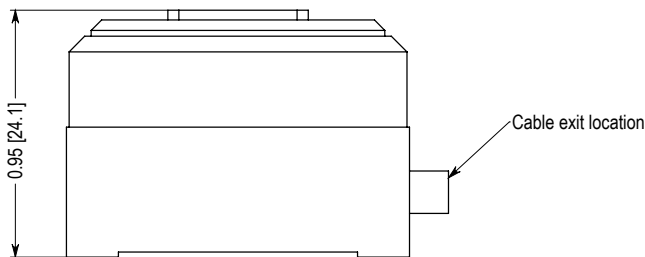
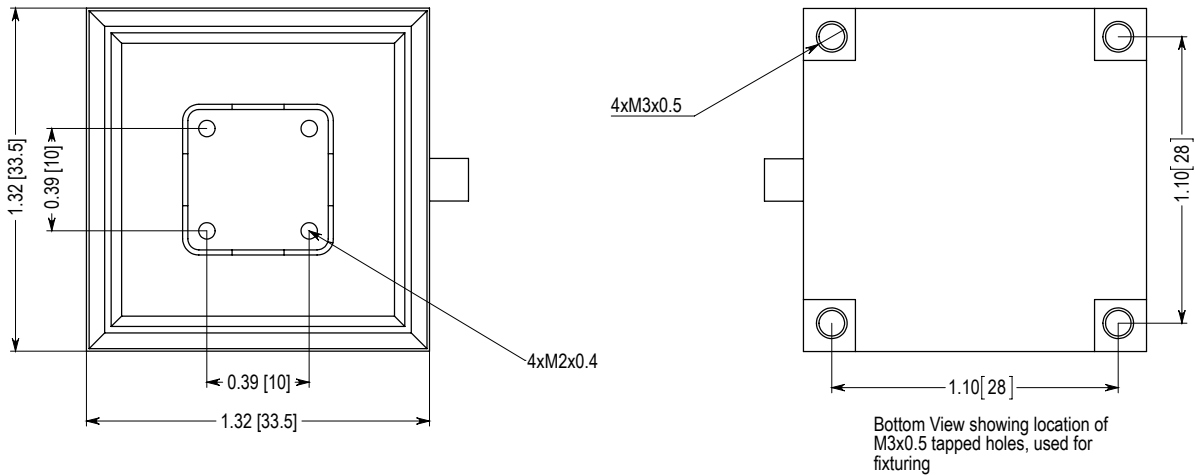
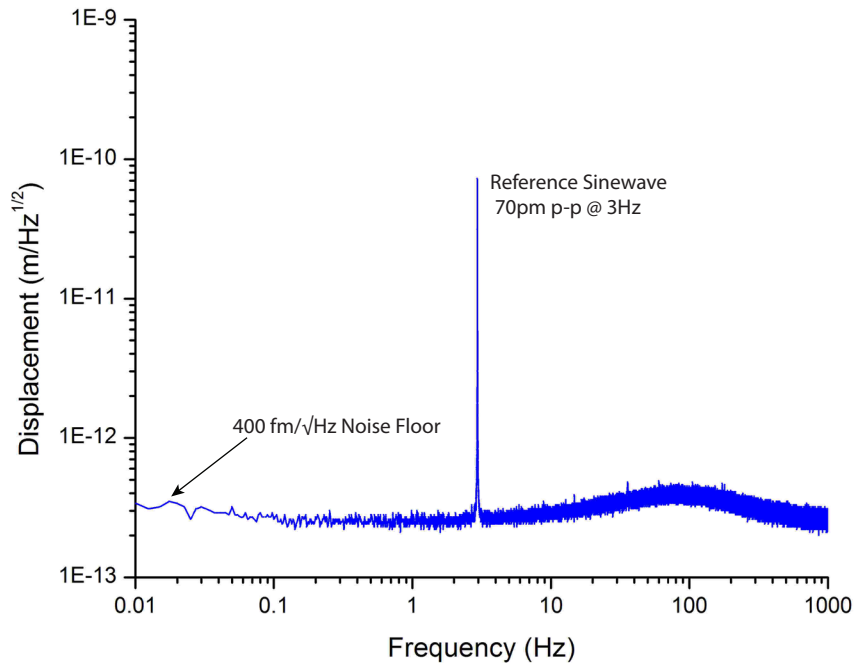
The Nano-METZ is a compact z-axis nanopositioning system designed for high speed scanning and ultra-low noise characteristics for demanding AFM and metrology applications. The innovative design of the Nano-METZ coupled with our proprietary PicoQ® sensor technology yields a resonant frequency of 14.5kHz and a noise floor of 400 femtometers/ $\sqrt{\text{Hz}}$. The result: unparalleled speed, response and precision for the most demanding and discerning metrology applications. Related products include the Nano-MET2, Nano-MET3, Nano-MET10 and Nano-MET20 nanopositioning systems.

Technical Specifications

Range of motion	5 μm
Resolution	0.005 nm
Resonant Frequency	14.5 kHz
Recommended max. load (horizontal)*	0.1 kg
Recommended max. load (vertical)*	0.1 kg
Body Material	Al or Titanium
Controller	Nano-Drive®

* Larger load requirements should be discussed with our engineering staff.

Low Position Noise



Dimensions in Inches [mm]